

1140LA POWER AMPLIFIER

1000 Watts RF Power For:

- Industrial
- Medical
- Lab Use



Featuring:

- 10 KHz – 2 MHz
- Power Measurement
 - Forward & Reflected
- Instantaneous Bandwidth
- Solid State Reliability
- Forced Air Cooling

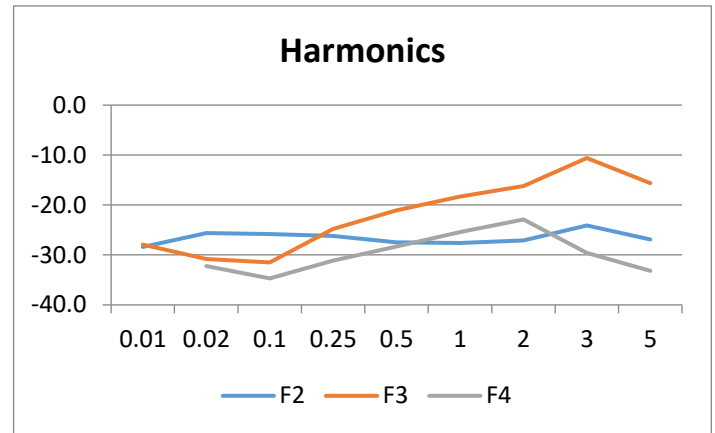
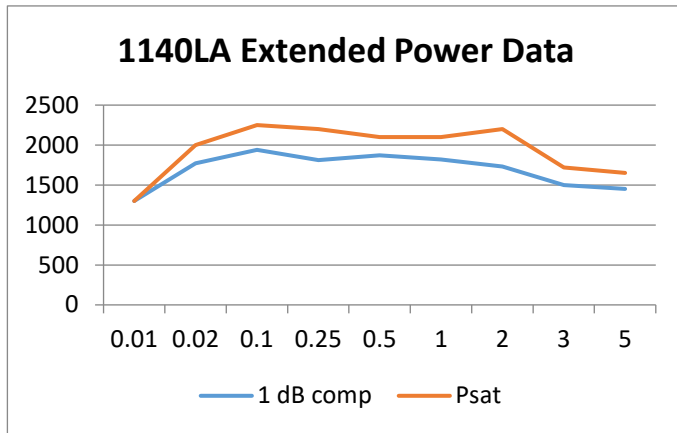
E&I 1140LA Specifications

Class of Operation:	Class AB
Frequency Coverage:	10 KHz – 2 MHz
Rated Power:	1,000 Watts
Saturated Power:	1,500 Watts
Power Gain:	55 dB nominal
Gain Flatness:	+/- 1.5 dB
Input Power for Rated Pout:	~ 3 mW or 5 dBm
Input Impedance / VSWR:	50 Ω / VSWR 1.5:1 Max
Output Impedance / VSWR:	50 Ω / VSWR 2:1 Max
Ruggedness:	∞:1 VSWR
Stability:	Unconditional into any passive or reactive load
Protection:	Unit will withstand input signal of +13 dBm without damage (1.0 V rms) max.
AC Input:	100 – 240 VAC 208 VAC 13 Amps Max 120 VAC 25 Amps Max
Temperature Range:	0° – 45° C
Cooling:	Forced Air
Dimensions (H x W x D):	13.12 x 16.71 x 20.1 inches 333.2 x 424.4 x 510.1 mm
Weight:	108 lbs (49 kg)
Connectors:	N
Rack Mounting:	Yes
RF Input Signal:	AM, FM, SSB, Pulsed



1140LA POWER AMPLIFIER

Typical Data



@ 1,000 Watts Pout into 50 Ω

Protection:

- Software Overdrive Limit: 1,575 Watts
- Software Reverse Power Limit: 1,000 Watts

Performance into 50 ohms

Input				Amplifier Gain Nominal dB	Output			
Input Power Watts	dBm	V p-p Volts	V rms Volts		Output Power dBm	Watts	V p-p Volts	V rms Volts
0.000316	-5.00	0.36	0.13	55	50.00	100.00	200.00	70.71
0.0013	1.02	0.71	0.25	55	56.02	400.00	400.00	141.42
0.0032	5.03	1.13	0.40	55	60.03	1008.06	635.00	224.51
0.0044	6.48	1.33	0.47	55	61.48	1406.25	750.00	265.17



Electronics & Innovation, Ltd.
150 Research Blvd.
Rochester, NY 14623
Tel: 585-214-0598 / Fax: 585-214-0580
www.eandiltd.com